

STORM SEWER QUANTITIES

**STORM SEWER QUANTITIES**

| ITEM NO. | TYPE OF WORK   | UNIT     | QUANTITIES                            |                     |                       |                     |                                   |                                   |                      |                             | UNDISTRIBUTED | TOTAL |      |
|----------|--|----------|---------------------------------------|---------------------|-----------------------|---------------------|-----------------------------------|-----------------------------------|----------------------|-----------------------------|---------------|-------|------|
|          |  |          | GLENVIEW DR/<br>WOODLAWN DR<br>(G1-3) | INDIAN TR<br>(I1-3) | JENEWEIN RD<br>(J1-2) | LOVELL LN<br>(L1-2) | MCKENNA BLVD<br>(NORTH)<br>(M1-3) | MCKENNA BLVD<br>(SOUTH)<br>(M4-5) | SAALSAA RD<br>(S1-4) | PIPING ROCK RD<br>(PR1-PR2) |               |       |      |
| 10702    | TRAFFIC CONTROL FOR STORM SEWER INSTALLATION                       | LUMP SUM |                                       |                     |                       |                     |                                   |                                   |                      |                             |               |       | 1    |
| 10912    | MOBILIZATION FOR STORM SEWER INSTALLATION                          | LUMP SUM |                                       |                     |                       |                     |                                   |                                   |                      |                             |               |       | 1    |
| 20205    | SELECT FILL  | CY       |                                       |                     |                       |                     |                                   |                                   |                      | 40                          |               |       | 40   |
| 20221    | TOPSOIL  | SY       | 100                                   | 20                  | 10                    |                     |                                   |                                   |                      | 1400                        |               |       | 1530 |
| 20311    | REMOVE SEWER ACCESS STRUCTURE                                      | EACH     |                                       |                     |                       |                     |                                   |                                   |                      |                             | 2             |       | 2    |
| 20312    | REMOVE CATCHBASIN  | EACH     |                                       |                     |                       |                     |                                   |                                   |                      |                             | 2             |       | 2    |
| 20313    | REMOVE INLET   | EACH     | 7                                     | 2                   |                       | 1                   |                                   |                                   | 1                    | 2                           |               |       | 13   |
| 20314    | REMOVE PIPE  | LF       |                                       |                     | 96                    |                     |                                   |                                   |                      | 200                         |               |       | 296  |
| 20321    | REMOVE CONCRETE PAVEMENT   | S.Y.     |                                       |                     |                       |                     |                                   |                                   |                      | 32                          |               |       | 32   |
| 20336    | PIPE PLUG  | EACH     |                                       | 1                   | 2                     |                     |                                   |                                   |                      |                             |               |       | 3    |
| 20402    | CLEARING   | STA      |                                       |                     |                       |                     |                                   |                                   |                      | 2.6                         |               | 1.0   | 3.6  |
| 20407    | GRUBBING   | STA      |                                       |                     |                       |                     |                                   |                                   |                      | 2.6                         |               | 1.0   | 3.6  |
| 20701    | TERRACE SEEDING  | SY       | 100                                   | 20                  | 10                    |                     |                                   |                                   |                      | 1400                        |               |       | 1530 |
| 21013    | STREET SWEEPING  | LUMP SUM |                                       |                     |                       |                     |                                   |                                   |                      |                             |               |       | 1    |
| 21017    | SILT SOCK (8 INCH) - COMPLETE                                      | LF       | 30                                    | 10                  |                       |                     |                                   |                                   |                      | 100                         | 20            | 40    | 200  |
| 21031    | INLET PROTECTION, TYPE C - COMPLETE                                | EACH     | 9                                     | 2                   | 6                     | 9                   | 6                                 |                                   | 3                    | 10                          | 2             |       | 47   |
| 21041    | INLET PROTECTION, TYPE D - COMPLETE                                | EACH     | 4                                     | 4                   |                       |                     |                                   |                                   |                      | 6                           |               |       | 14   |
| 21063    | EROSION MATTING, CLASS I, TYPE A - ORGANIC                         | SY       | 100                                   | 20                  | 10                    |                     |                                   |                                   |                      | 1400                        |               |       | 1530 |
| 40382    | REMOVE & REPLACE CONCRETE CURB & GUTTER, HAND PLACED - RESURFACING | LF       | 120                                   | 55                  | 40                    | 80                  | 20                                |                                   | 30                   | 100                         | 40            | 50    | 535  |
| 40391    | REMOVE & REPLACE 5" THICK CONCRETE SIDEWALK - RESURFACING          | SF       |                                       |                     |                       |                     |                                   |                                   |                      | 150                         |               | 50    | 200  |
| 50211    | SELECT BACKFILL FOR STORM SEWER                                    | TF       | 340                                   | 875                 | 67                    | 271                 | 962                               |                                   | 238                  | 1213                        | 183           |       | 4149 |
| 50225    | UTILITY TRENCH PATCH TYPE III*                                     | TF       |                                       |                     |                       | 271                 | 900                               |                                   |                      | 336                         |               |       | 1507 |
| 50227    | UTILITY TRENCH PATCH TYPE IV*                                      | TF       | 331                                   | 865                 | 173                   |                     | 62                                |                                   | 238                  | 205                         | 183           |       | 2057 |
| 50401    | 12 INCH RCP STORM SEWER PIPE                                       | LF       |                                       |                     |                       | 80                  | 19                                |                                   |                      |                             |               |       | 99   |
| 50402    | 15 INCH RCP STORM SEWER PIPE                                       | LF       |                                       |                     |                       |                     |                                   |                                   |                      |                             |               |       | 0    |
| 50403    | 18 INCH RCP STORM SEWER PIPE                                       | LF       |                                       |                     |                       | 191                 | 943                               |                                   | 238                  |                             |               |       | 1372 |
| 50404    | 21 INCH RCP STORM SEWER PIPE                                       | LF       |                                       |                     |                       |                     |                                   |                                   |                      | 23                          |               |       | 23   |
| 50407    | 30 INCH RCP STORM SEWER PIPE                                       | LF       |                                       |                     |                       |                     |                                   |                                   |                      | 138                         |               |       | 138  |
| 50419    | 19 INCH X 30 INCH HERCP STORM SEWER PIPE                           | LF       | 9                                     | 10                  |                       |                     |                                   |                                   |                      |                             |               |       | 19   |
| 50432    | 12 INCH TYPE II STORM SEWER PIPE                                   | LF       | 87                                    | 72                  | 67                    |                     |                                   |                                   |                      | 173                         | 183           |       | 582  |
| 50433    | 15 INCH TYPE II STORM SEWER PIPE                                   | LF       | 199                                   |                     |                       |                     |                                   |                                   |                      | 8                           |               |       | 207  |
| 50434    | 18 INCH TYPE II STORM SEWER PIPE                                   | LF       | 45                                    | 803                 |                       |                     |                                   |                                   |                      | 368                         |               |       | 1216 |
| 50437    | 30 INCH TYPE II STORM SEWER PIPE                                   | LF       |                                       |                     |                       |                     |                                   |                                   |                      | 502                         |               |       | 502  |
| 50467    | 30 INCH RCP AE   | EACH     |                                       |                     |                       |                     |                                   |                                   |                      | 1                           |               |       | 1    |
| 50499    | CONCRETE COLLAR  | EACH     | 1                                     | 1                   |                       |                     |                                   |                                   |                      | 3                           |               |       | 5    |
| 50607    | 30" RCP AE GATE  | EACH     |                                       |                     |                       |                     |                                   |                                   |                      | 1                           |               |       | 1    |
| 50723    | 3'x3' STORM SAS  | EACH     | 1                                     | 2                   |                       | 2                   | 4                                 |                                   | 1                    | 4                           | 1             |       | 15   |
| 50724    | 4'x4' STORM SAS  | EACH     |                                       |                     |                       |                     |                                   |                                   |                      | 2                           |               |       | 2    |
| 50741    | TYPE 'H' INLET   | EACH     | 6                                     | 4                   |                       | 6                   | 2                                 |                                   | 1                    | 6                           | 2             |       | 27   |
| 50768    | TERRACE INLET TYPE 3   | EACH     | 3                                     | 1                   |                       |                     |                                   |                                   |                      | 2                           |               |       | 6    |
| 50792    | STORM SEWER TAP  | EACH     |                                       |                     | 2                     |                     |                                   | 1                                 |                      |                             |               |       | 3    |
| 50801    | UTILITY LINE OPENING (ULO)   | EACH     | 2                                     | 2                   |                       | 3                   | 3                                 |                                   |                      |                             |               | 5     | 15   |
| 50802    | CONCRETE SUPPORTS  | EACH     |                                       |                     |                       | 1                   |                                   |                                   |                      |                             |               |       | 1    |
| 90030    | STORM SAS SPECIAL  | EACH     |                                       |                     | 1                     | 1                   |                                   |                                   | 1                    |                             |               |       | 3    |
| 90031    | GREENTREE LANDFILL ACCESS ROAD                                     | LUMP SUM |                                       |                     |                       |                     |                                   |                                   |                      | 1                           |               |       | 1    |
| 90032    | CLAY PLUG  | EACH     |                                       |                     |                       |                     |                                   |                                   |                      | 2                           |               |       | 2    |
| 90033    | STORM SEWER TAP (PRIVATE)  | EACH     |                                       |                     |                       |                     |                                   |                                   |                      | 2                           |               |       | 2    |

\* Total Quantity of Trench Patch has been split by percentage between Type III and Type IV Trench Patch. Quantities to be determined by work schedule and traffic control.

# STORM SEWER SCHEDULE

\*REV. 2/3/2017-FBEG

2017 RESURFACING  
PROJECT NO. 11369

SHEET NO.  
G-3

STORM SEWER SCHEDULE

GLENVIEW DR / WOODLAND DR

CITY OF MADISON

## PROPOSED STRUCTURES

| STRUC. NO.            | STATION   | LOCATION (OFFSET) | TYPE                 | TOP OF CASTING | E.I.   | DEPTH | NOTES                |
|-----------------------|-----------|-------------------|----------------------|----------------|--------|-------|----------------------|
| <b>GLENVIEW DR</b>    |           |                   |                      |                |        |       |                      |
| GS-0                  |           |                   | COLLAR               | --             | 865.30 |       | (2)                  |
| GS-1                  | 200+28.00 | RT-22.12          | TERRACE INLET TYPE 3 | 868.00         | 865.37 | 2.63  | FP; (1)              |
| GS-2                  | 201+16.67 | RT-7.09           | 3X3 SAS              | 869.40         | 865.81 | 3.59  | W/ R-1550            |
| GS-2A                 | 202+25.00 | RT-15.57          | H INLET              | 873.16         | 868.87 | 4.29  | W/ R-3067-7004-V     |
| GS-2B                 | 202+35.00 | RT-15.57          | H INLET              | 873.67         | 869.61 | 4.06  | W/ R-3067-7004-V     |
| GS-2C                 | 202+25.00 | LT-15.18          | H INLET              | 873.74         | 869.66 | 4.08  | W/ R-3067-7004-V     |
| GS-2D                 | 202+35.00 | LT-15.18          | H INLET              | 874.29         | 870.17 | 4.12  | W/ R-3067-7004-V     |
| <b>WOODLAWN DRIVE</b> |           |                   |                      |                |        |       |                      |
| WS-1                  | 300+41.71 | RT-10.40          | TERRACE INLET TYPE 3 | 863.66         | 860.54 | 3.12  | FP; (1)              |
| WS-2                  | 300+65.69 | LT-27.95          | TERRACE INLET TYPE 3 | 863.27         | 860.76 | 2.51  | FP; (1)              |
| WS-3                  | 300+57.00 | LT-37.20          | H INLET              | 863.85         | 861.06 | 2.79  | FP; W/ R-3067-7004-V |
| WS-4                  | 300+85.21 | LT-15.36          | H INLET              | 864.10         | 861.16 | 2.94  | FP; W/ R-3067-7004-V |

## STORM STRUCTURE REMOVALS

| STRUCTURE NO.         | ID NO.      | STATION   | LOCATION (OFFSET) | TYPE    | NOTES |
|-----------------------|-------------|-----------|-------------------|---------|-------|
| <b>GLENVIEW DR</b>    |             |           |                   |         |       |
| RI-1                  | IN 6457-007 | 200+31.50 | RT-19.67          | H INLET | -     |
| RI-2                  | IN 6457-007 | 200+33.50 | RT-21.50          | H INLET | -     |
| <b>WOODLAWN DRIVE</b> |             |           |                   |         |       |
| RW-1                  | IN 6457-002 | 300+63.31 | LT-25.50          | H INLET | -     |
| RW-2                  | IN 6457-002 | 300+65.93 | LT-22.94          | H INLET | -     |
| RW-3                  | -           | 300+71.68 | LT-18.94          | H INLET | -     |
| RW-4                  | IN 6457-009 | 300+43.23 | RT-7.75           | H INLET | -     |
| RW-5                  | IN 6457-009 | 300+46.34 | RT-9.87           | H INLET | -     |

## ULO SCHEDULE

| STRUCTURE NO.      | STATION   | LOCATION (OFFSET) | TYPE | NOTES |
|--------------------|-----------|-------------------|------|-------|
| <b>GLENVIEW DR</b> |           |                   |      |       |
| ULO-1              | 200+28.00 | RT-25.72          | GAS  | -     |
| ULO-2              | 201+87.94 | RT-12.57          | GAS  | -     |

## SPECIFIC NOTES:

- (1) STATIONED TO CENTER OF GRATE; SEE SDD 5.7.12B; TOP OF CURB PROVIDED IS TOP OF GRATE, CONTRACTOR IS REMINDED THE CURB FLOWLINE IS TO BE HAND POURED TO CREATE A DEPRESSION IN THE FLOWLINE AND FLUME INTO THE STRUCTURE. THE FLOWLINE IS NOT TO BE POURED STRAIGHT THROUGH AND THE DIFFERENCE BETWEEN THE FLOWLINE ELEVATION AND ENTRANCE LIP ELEVATION TAKEN UP IN THE 1-2 FT TRANSITION.
- (2) MATCH EXISTING INVERT

## PIPES

| PIPE NO.              | FROM (DNSTM) | TO (UPSTM) | DISCH. E.I. | INLET E.I. | PLAN (PAY) LGTH (FT) | PIPE LGTH (FT) | SLOPE (%) | PIPE SIZE | TYPE    | NOTES |
|-----------------------|--------------|------------|-------------|------------|----------------------|----------------|-----------|-----------|---------|-------|
| <b>GLENVIEW DR</b>    |              |            |             |            |                      |                |           |           |         |       |
| GP-0                  | GS-0         | GS-1       | 865.30      | 865.37     | 9.0                  | 8.0            | 0.86%     | 19X30     | HERCP   | -     |
| * GP-1                | GS-1         | GS-2       | 865.37      | 865.81     | 90.0                 | 87.0           | 0.50%     | 15"       | TYPE II | -     |
| * GP-2                | GS-2         | GS-2A      | 865.81      | 868.87     | 109.0                | 106.0          | 2.90%     | 15"       | TYPE II | -     |
| * GP-2A               | GS-2A        | GS-2B      | 869.12      | 869.61     | 10.00                | 7.00           | 6.93%     | 12"       | TYPE II | -     |
| * GP-3                | GS-2A        | GS-2C      | 869.12      | 869.66     | 31.0                 | 29.0           | 1.88%     | 12"       | TYPE II | -     |
| * GP-3A               | GS-2C        | GS-2D      | 869.66      | 870.17     | 10.0                 | 7.0            | 7.23%     | 12"       | TYPE II | -     |
| <b>WOODLAWN DRIVE</b> |              |            |             |            |                      |                |           |           |         |       |
| WP-1                  | WS-1         | WS-2       | 860.54      | 860.76     | 45.0                 | 43.0           | 0.50%     | 18"       | TYPE II | -     |
| WP-2                  | WS-2         | WS-3       | 861.01      | 861.06     | 13.0                 | 9.0            | 0.50%     | 12"       | TYPE II | NCM   |
| WP-3                  | WS-2         | WS-4       | 861.01      | 861.16     | 23.0                 | 20.0           | 0.50%     | 12"       | TYPE II | NCM   |

## STORM PIPE REMOVALS

| REMOVE NO.            | REMOVE FROM | REMOVE TO | LGTH (FT) | PIPE SIZE | PIPE TYPE | PAID (Y/N) | NOTES |
|-----------------------|-------------|-----------|-----------|-----------|-----------|------------|-------|
| <b>GLENVIEW DR</b>    |             |           |           |           |           |            |       |
| RPG-1                 | GS-0        | RI-1      | 9         | 15"       | RCP       | N          | -     |
| <b>WOODLAWN DRIVE</b> |             |           |           |           |           |            |       |
| RPW-1                 | RW-1        | RW-4      | 39        | 15"       | RCP       | N          | -     |

**NOTE:** PLAN LENGTH IS FROM CENTER OF STRUCTURE TO CENTER OF STRUCTURE. PIPE LENGTH IS ACTUAL LENGTH OF PIPE FROM STRUCTURE WALL TO STRUCTURE WALL. SLOPE CALCULATED USING PIPE LENGTH.

## STANDARD NOTES:

- ABBREVIATIONS: AE = APRON ENDWALL; RCP = REINFORCED CONCRETE PIPE; HERCP = HORIZONTAL ELLIPTICAL REINFORCED CONCRETE PIPE; DNA = DOES NOT APPLY; SAS = SEWER ACCESS STRUCTURE; LP = LOW POINT INLET STRUCTURE; FP = FIELD POURED STRUCTURE; TR = TOP OF CONCRETE ROOF; NCM = NO CROWN MATCH FOR PIPES
- APPROXIMATE DISCHARGE E.I. GIVEN, ADJUST E.I. AND PIPE SLOPE IN THE FIELD.
- TOP OF CASTING GRADE GIVEN IS THE TOP OF CURB FOR INLET STRUCTURES AND THE FLOWLINE OF THE CLOSED CASTING FOR SAS's.
- TOP OF CONCRETE ROOF (TR) IS 1.25' BELOW TOP OF CASTING UNLESS OTHERWISE NOTED.
- ALL REINFORCED CONCRETE PIPES TO BE CLASS III UNLESS OTHERWISE NOTED.
- SURVEYOR TO CONFIRM THAT ALL INLET STATION / OFFSETS LINE UP WITH PROPOSED CURB AND GUTTER.
- ALL STRUCTURES CALLED OUT AS FIELD POURED SHALL BE FIELD POURED. ALL OTHER STRUCTURES (NOT INDICATED AS FIELD POURED) SHALL BE SUBMITTED TO CITY ENGINEERING FOR APPROVAL IF PRECAST STRUCTURES ARE PREFERRED. CONTACT ERIC DUNDEE OF CITY ENGINEERING AT (608) 266-4913 FOR PRECAST APPROVALS, OR FAX SHOP DRAWINGS TO (608) 264-9275, OR EMAIL SHOP DRAWINGS TO EDUNDEE@CITYOFMADISON.COM

# STORM SEWER SCHEDULE

\*REV. 2/3/2017-FBEG

2017 RESURFACING

SHEET NO.

PROJECT NO. 11369

I-3

STORM SEWER SCHEDULE

INDIAN TRACE

CITY OF MADISON

## PROPOSED STRUCTURES

| STRUC. NO.          | STATION   | LOCATION (OFFSET) | TYPE                 | TOP OF CASTING | E.I.   | DEPTH | NOTES                |
|---------------------|-----------|-------------------|----------------------|----------------|--------|-------|----------------------|
| <b>INDIAN TRACE</b> |           |                   |                      |                |        |       |                      |
| IS-0                | 100+59.86 | RT-11.90          | COLLAR               | --             | 867.41 | --    | (2)                  |
| IS-1                | 100+68.75 | RT-7.89           | TERRACE INLET TYPE 3 | 870.02         | 867.50 | 2.52  | (1)                  |
| IS-2                | 102+01.05 | RT-9.00           | 3X3 SAS              | 874.65         | 870.73 | 3.92  | W/ R-1550            |
| IS-2A               | 102+10.00 | RT-15.16          | H INLET              | 875.35         | 871.30 | 4.05  | FP; W/ R-3067-7004-V |
| IS-2B               | 102+10.00 | LT-15.22          | H INLET              | 875.29         | 871.46 | 3.83  | W/ R-3067-7004-V     |
| IS-3                | 108+32.18 | RT-9.00           | 3X3 SAS              | 903.95         | 900.25 | 3.70  | W/ R-1550            |
| IS-3A               | 108+40.00 | RT-15.19          | H INLET              | 904.61         | 900.88 | 3.73  | FP; W/ R-3067-7004-V |
| IS-3B               | 108+40.00 | LT-15.19          | H INLET              | 904.62         | 900.98 | 3.64  | W/ R-3067-7004-V     |
| IS-4                | 108+72.00 | RT-9.07           | PLUG                 | --             | 900.44 | --    |                      |

## PIPES

| PIPE NO.            | FROM (DNSTM) | TO (UPSTM) | DISCH. E.I. | INLET E.I. | PLAN (PAY) LGTH (FT) | PIPE LGTH (FT) | SLOPE (%) | PIPE SIZE | TYPE    | NOTES |
|---------------------|--------------|------------|-------------|------------|----------------------|----------------|-----------|-----------|---------|-------|
| <b>INDIAN TRACE</b> |              |            |             |            |                      |                |           |           |         |       |
| IP-0                | IS-0         | IS-1       | 867.41      | 867.50     | 10.0                 | 9.0            | 1.00%     | 19X30     | HERCP   | -     |
| * IP-1              | IS-1         | IS-2       | 867.50      | 870.73     | 132.0                | 130.0          | 2.50%     | 18"       | TYPE II | -     |
| * IP-2              | IS-2         | IS-3       | 870.73      | 900.25     | 631.0                | 628.0          | 4.70%     | 18"       | TYPE II | -     |
| * IP-2A             | IS-2         | IS-2A      | 871.23      | 871.3      | 11.00                | 7.00           | 1.00%     | 12"       | TYPE II | -     |
| * IP-2B             | IS-2         | IS-2B      | 871.23      | 871.46     | 26.0                 | 23.0           | 1.00%     | 12"       | TYPE II | -     |
| * IP-3              | IS-3         | IS-3A      | 900.75      | 900.88     | 10.0                 | 6.5            | 2.00%     | 12"       | TYPE II | -     |
| * IP-3A             | IS-3         | IS-3B      | 900.75      | 900.98     | 25.0                 | 23.0           | 1.00%     | 12"       | TYPE II | -     |
| * IP-4              | IS-3         | IS-4       | 900.25      | 900.88     | 40.0                 | 38.0           | 0.50%     | 18"       | TYPE II | -     |

## STORM STRUCTURE REMOVALS

| STRUCTURE NO.       | ID NO.      | STATION   | LOCATION (OFFSET) | TYPE    | NOTES |
|---------------------|-------------|-----------|-------------------|---------|-------|
| <b>INDIAN TRACE</b> |             |           |                   |         |       |
| RI-1                | IN 6457-004 | 100+70.88 | RT-5.31           | H INLET | -     |
| RI-2                | IN 6457-004 | 100+71.60 | RT-8.91           | H INLET | -     |

## STORM PIPE REMOVALS

| REMOVE NO.          | REMOVE FROM | REMOVE TO | LGTH (FT) | PIPE SIZE | PIPE TYPE | PAID (Y/N) | NOTES |
|---------------------|-------------|-----------|-----------|-----------|-----------|------------|-------|
| <b>INDIAN TRACE</b> |             |           |           |           |           |            |       |
| RPI-1               | IS-0        | RI-1      | 10        | 15"       | RCP       | N          | -     |

## ULO SCHEDULE

| STRUCTURE NO.       | STATION   | LOCATION (OFFSET) | TYPE | NOTES |
|---------------------|-----------|-------------------|------|-------|
| <b>INDIAN TRACE</b> |           |                   |      |       |
| ULO-1               | 100+69.15 | RT-8.70           | GAS  | -     |
| ULO-2               | 108+66.00 | RT-9.40           | GAS  | -     |

**NOTE:** PLAN LENGTH IS FROM CENTER OF STRUCTURE TO CENTER OF STRUCTURE. PIPE LENGTH IS ACTUAL LENGTH OF PIPE FROM STRUCTURE WALL TO STRUCTURE WALL. SLOPE CALCULATED USING PIPE LENGTH.

## SPECIFIC NOTES:

- (1) STATIONED TO CENTER OF GRATE; SEE SDD 5.7.12B; TOP OF CURB PROVIDED IS TOP OF GRATE, CONTRACTOR IS REMINDED THE CURB FLOWLINE IS TO BE HAND POURED TO CREATE A DEPRESSION IN THE FLOWLINE AND FLUME INTO THE STRUCTURE. THE FLOWLINE IS NOT TO BE POURED STRAIGHT THROUGH AND THE DIFFERENCE BETWEEN THE FLOWLINE ELEVATION AND ENTRANCE LIP ELEVATION TAKEN UP IN THE 1-2 FT TRANSITION.
- (2) CONNECT TO EXISTING PIPE

## STANDARD NOTES:

- ABBREVIATIONS: AE = APRON ENDWALL; RCP = REINFORCED CONCRETE PIPE; HERCP = HORIZONTAL ELLIPTICAL REINFORCED CONCRETE PIPE; DNA = DOES NOT APPLY; SAS = SEWER ACCESS STRUCTURE; LP = LOW POINT INLET STRUCTURE; FP = FIELD POURED STRUCTURE; TR = TOP OF CONCRETE ROOF; NCM = NO CROWN MATCH FOR PIPES
- APPROXIMATE DISCHARGE E.I. GIVEN, ADJUST E.I. AND PIPE SLOPE IN THE FIELD.
- TOP OF CASTING GRADE GIVEN IS THE TOP OF CURB FOR INLET STRUCTURES AND THE FLOWLINE OF THE CLOSED CASTING FOR SAS's.
- TOP OF CONCRETE ROOF (TR) IS 1.25' BELOW TOP OF CASTING UNLESS OTHERWISE NOTED.
- ALL REINFORCED CONCRETE PIPES TO BE CLASS III UNLESS OTHERWISE NOTED.
- SURVEYOR TO CONFIRM THAT ALL INLET STATION / OFFSETS LINE UP WITH PROPOSED CURB AND GUTTER.
- ALL STRUCTURES CALLED OUT AS FIELD POURED SHALL BE FIELD POURED. ALL OTHER STRUCTURES (NOT INDICATED AS FIELD POURED) SHALL BE SUBMITTED TO CITY ENGINEERING FOR APPROVAL IF PRECAST STRUCTURES ARE PREFERRED. CONTACT ERIC DUNDEE OF CITY ENGINEERING AT (608) 266-4913 FOR PRECAST APPROVALS, OR FAX SHOP DRAWINGS TO (608) 264-9275, OR EMAIL SHOP DRAWINGS TO EDUNDEE@CITYOFMADISON.COM

# STORM SEWER SCHEDULE

\*REV. 2/3/2017-FBEG

2017 RESURFACING  
PROJECT NO. 11369

SHEET NO.  
J-2

STORM SEWER SCHEDULE

JENEWEIN RD

CITY OF MADISON

## PROPOSED STRUCTURES

| STRUC. NO.         | STATION   | LOCATION (OFFSET) | TYPE    | TOP OF CASTING | E.I.   | DEPTH | NOTES                  |
|--------------------|-----------|-------------------|---------|----------------|--------|-------|------------------------|
| <b>JENEWEIN RD</b> |           |                   |         |                |        |       |                        |
| JS-2               | 401+63.33 | LT-7.08           | 3X3 SAS | 986.94         | 983.54 | 3.40  | FP; W/ R-1550-0054 (1) |
| JS-3A              | 401+27.90 | LT-17.68          | STM TAP | -              | 984.37 | -     | TAP EX IN 3668-001     |
| JS-3B              | 401+80.50 | LT-34.12          | STM TAP | -              | 984.53 | -     | TAP EX IN              |

## PIPES

| PIPE NO.           | FROM (DNSTM) | TO (UPSTM) | DISCH. E.I. | INLET E.I. | PLAN (PAY) LGTH (FT) | PIPE LGTH (FT) | SLOPE (%) | PIPE SIZE | TYPE           | NOTES |
|--------------------|--------------|------------|-------------|------------|----------------------|----------------|-----------|-----------|----------------|-------|
| <b>JENEWEIN RD</b> |              |            |             |            |                      |                |           |           |                |       |
| * JP-1A            | JS-2         | JS-3A      | 983.54      | 984.37     | 36.0                 | 34.0           | 2.44%     | 12"       | <b>TYPE II</b> |       |
| * JP-1B            | JS-2         | JS-3B      | 983.54      | 984.53     | 31.0                 | 29.0           | 3.36%     | 12"       | <b>TYPE II</b> |       |

## REMOVE STORM PIPE

| REMOVE NO.         | REMOVE FROM       | REMOVE TO | LENGTH (FT) | PAID (Y/N) | PIPE SIZE | TYPE | NOTES      |
|--------------------|-------------------|-----------|-------------|------------|-----------|------|------------|
| <b>JENEWEIN RD</b> |                   |           |             |            |           |      |            |
| JRP-1              | STA 401+40 21' RT | JS-3A     | 77.0        | Y-PARTIAL  | 12"       | RCP  | 41 LF PAID |
| JRP-2              | JS-1              | JS-3B     | 55.0        | Y          | 12"       | RCP  |            |

## PIPE ABANDONMENTS

| ABAN NO.           | ABAN FROM | ABAN TO           | LENGTH (FT) | PIPE SIZE | TYPE | NOTES |
|--------------------|-----------|-------------------|-------------|-----------|------|-------|
| <b>JENEWEIN RD</b> |           |                   |             |           |      |       |
| JRP-1              | JS-0      | STA 401+40 21' RT | 36.0        | 12"       | RCP  | PLUGS |

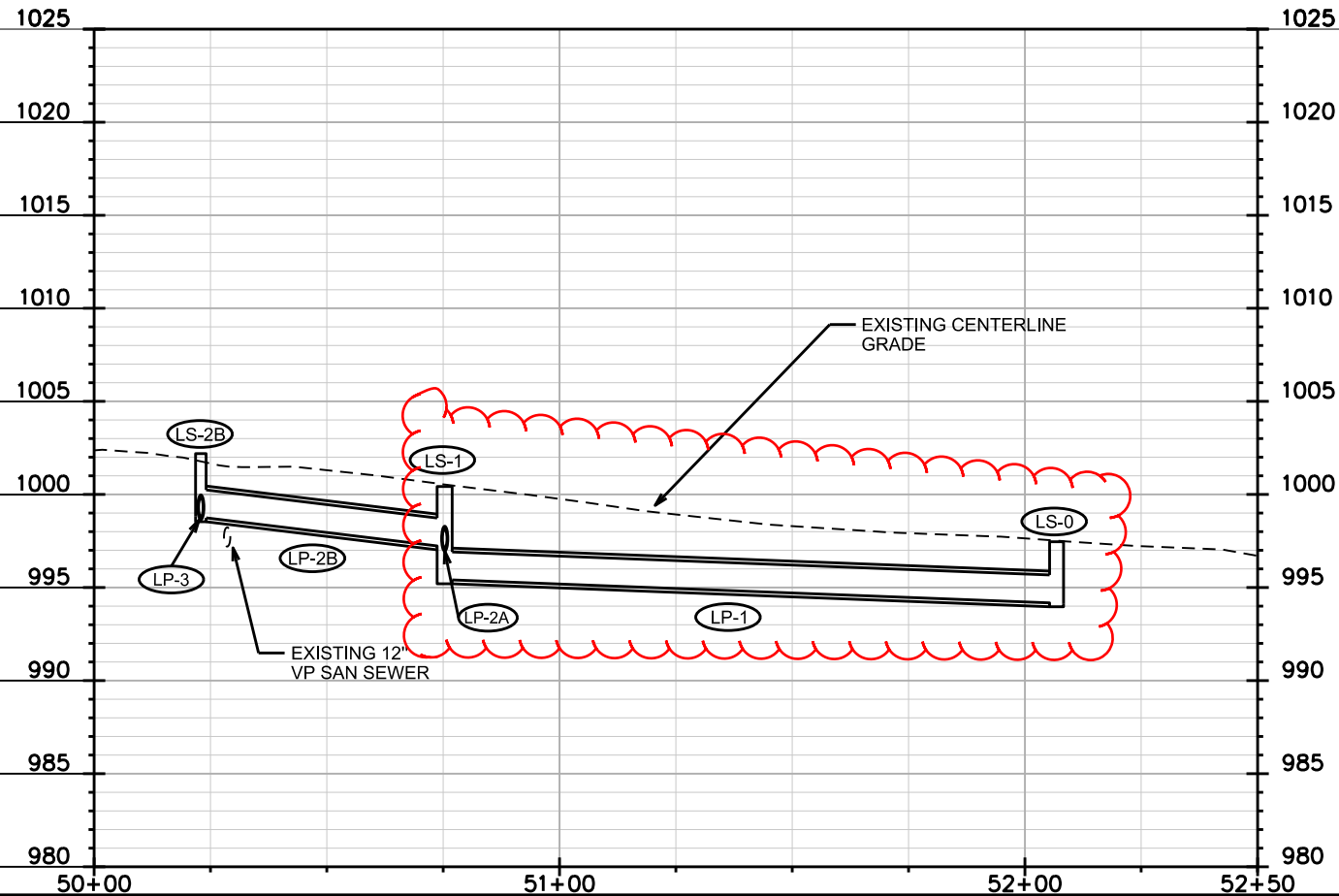
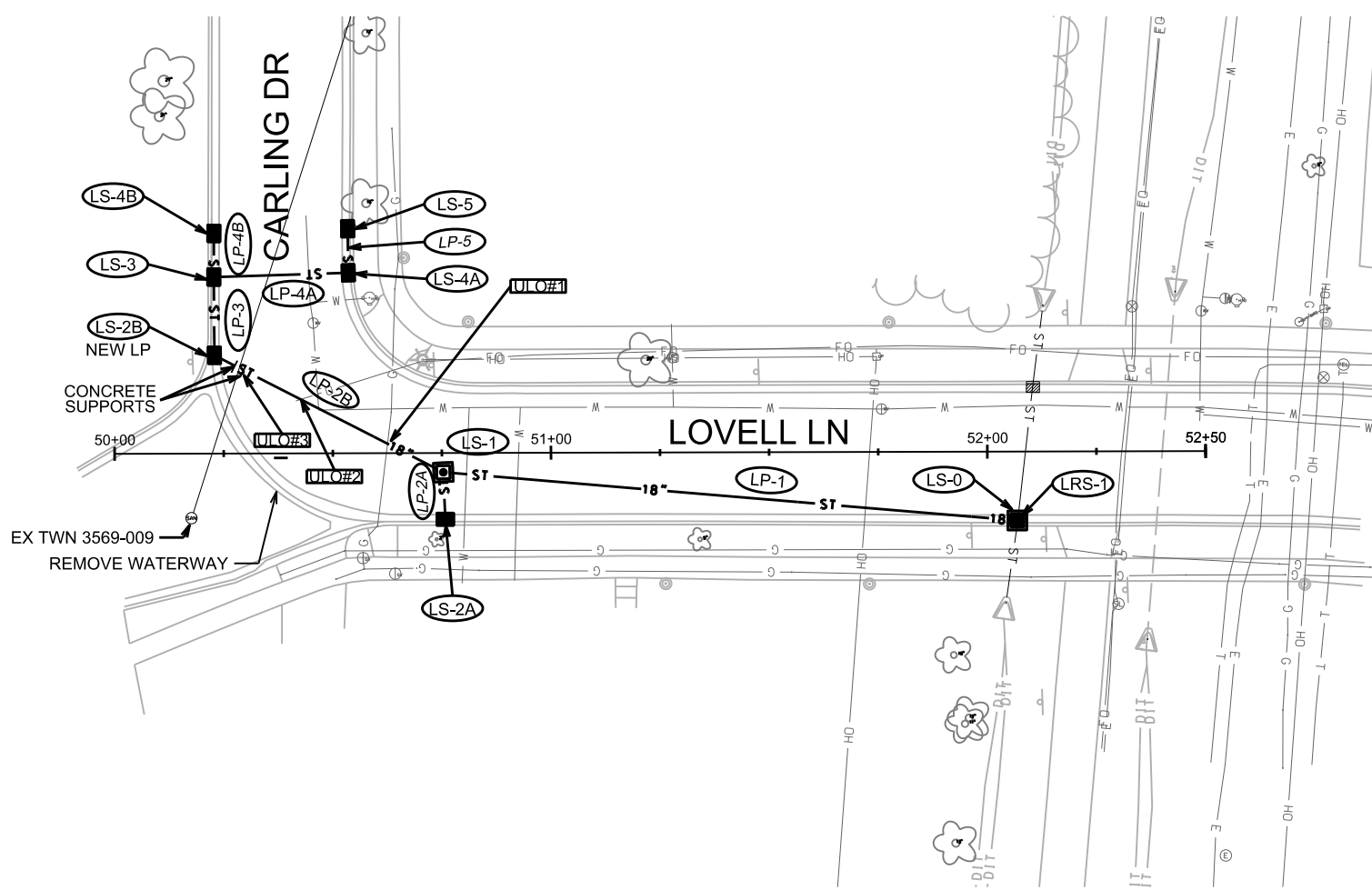
**NOTE:** PLAN LENGTH IS FROM CENTER OF STRUCTURE TO CENTER OF STRUCTURE. PIPE LENGTH IS ACTUAL LENGTH OF PIPE FROM STRUCTURE WALL TO STRUCTURE WALL. SLOPE CALCULATED USING PIPE LENGTH.

## SPECIFIC NOTES:

(1) STORM SEWER SADDLED SAS-PAID PER SPECIAL ITEM

## STANDARD NOTES:

- ABBREVIATIONS: AE = APRON ENDWALL; RCP = REINFORCED CONCRETE PIPE; HERCP = HORIZONTAL ELLIPTICAL REINFORCED CONCRETE PIPE; DNA = DOES NOT APPLY; SAS = SEWER ACCESS STRUCTURE; LP = LOW POINT INLET STRUCTURE; FP = FIELD POURED STRUCTURE; TR = TOP OF CONCRETE ROOF; NCM = NO CROWN MATCH FOR PIPES
- APPROXIMATE DISCHARGE E.I. GIVEN, ADJUST E.I. AND PIPE SLOPE IN THE FIELD.
- TOP OF CASTING GRADE GIVEN IS THE TOP OF CURB FOR INLET STRUCTURES AND THE FLOWLINE OF THE CLOSED CASTING FOR SAS's.
- TOP OF CONCRETE ROOF (TR) IS 1.25' BELOW TOP OF CASTING UNLESS OTHERWISE NOTED.
- ALL REINFORCED CONCRETE PIPES TO BE CLASS III UNLESS OTHERWISE NOTED.
- SURVEYOR TO CONFIRM THAT ALL INLET STATION / OFFSETS LINE UP WITH PROPOSED CURB AND GUTTER.
- ALL STRUCTURES CALLED OUT AS FIELD POURED SHALL BE FIELD POURED. ALL OTHER STRUCTURES (NOT INDICATED AS FIELD POURED) SHALL BE SUBMITTED TO CITY ENGINEERING FOR APPROVAL IF PRECAST STRUCTURES ARE PREFERRED. CONTACT FADI EL MUSA OF CITY ENGINEERING AT (608) 243-5214 FOR PRECAST APPROVALS, OR FAX SHOP DRAWINGS TO (608) 264-9275, OR EMAIL SHOP DRAWINGS TO FELMUSAGONZALEZ@CITYOFMADISON.COM



PLOT SCALE:

PLOT NAME:

REV. DATE:

ORIGINATOR: CITY OF MADISON, STREETS DIVISION

# STORM SEWER SCHEDULE

\*REV. 2/3/2017-FBEG

2017 RESURFACING  
PROJECT NO. 11369

SHEET NO.  
L-2

STORM SEWER SCHEDULE

LOVELL LN

CITY OF MADISON

## PROPOSED STRUCTURES

| STRUC. NO.       | STATION  | LOCATION (OFFSET) | TYPE         | TOP OF CASTING | E.I.          | DEPTH       | NOTES                     |
|------------------|----------|-------------------|--------------|----------------|---------------|-------------|---------------------------|
| <b>LOVELL LN</b> |          |                   |              |                |               |             |                           |
| LS-0             | 52+06.82 | RT-15.79          | 3X3 SAS w/ H | 997.46         | 994.15        | 3.31        | FP; W/ R-3067-7004-V (1)  |
| * LS-1           | 50+75.33 | RT-4.41           | 3X3 SAS      | 1000.43        | <b>995.44</b> | <b>4.99</b> | FP; W/ R-1550-0054        |
| LS-2A            | 50+75.76 | RT-15.17          | H INLET      | 1000.58        | 997.28        | 3.30        | W/ R-3007-7004-V          |
| LS-2B            | 50+22.93 | LT-22.52          | H INLET      | 1002.19        | 998.81        | 3.38        | LP; FP; W/ R-3007-7004-VB |
| LS-3             | 50+22.82 | LT-40.44          | H INLET      | 1002.39        | 998.90        | 3.49        | W/ R-3007-7004-V          |
| LS-4A            | 50+53.64 | LT-41.36          | H INLET      | 1002.04        | 999.04        | 3.00        | W/ R-3007-7004-V          |
| LS-4B            | 50+22.87 | LT-50.45          | H INLET      | 1002.51        | 999.01        | 3.50        | W/ R-3007-7004-V          |
| LS-5             | 50+53.51 | LT-51.46          | H INLET      | 1002.28        | 999.28        | 3.00        | W/ R-3007-7004-V          |

## PIPES

| PIPE NO.         | FROM (DNSTM) | TO (UPSTM) | DISCH. E.I. | INLET E.I.    | PLAN (PAY) LGTH (FT) | PIPE LGTH (FT) | SLOPE (%)    | PIPE SIZE | TYPE | NOTES      |
|------------------|--------------|------------|-------------|---------------|----------------------|----------------|--------------|-----------|------|------------|
| <b>LOVELL LN</b> |              |            |             |               |                      |                |              |           |      |            |
| * LP-1           | LS-0         | LS-1       | 994.15      | <b>995.44</b> | 132.0                | 129.0          | <b>1.00%</b> | 18"       | RCP  |            |
| * LP-2A          | LS-1         | LS-2A      | 997.13      | 997.28        | 11.0                 | 8.0            | 1.81%        | 12"       | RCP  | <b>NCM</b> |
| * LP-2B          | LS-1         | LS-2B      | 997.13      | 998.81        | 59.0                 | 56.0           | 3.00%        | 18"       | RCP  | <b>NCM</b> |
| * LP-3           | LS-2B        | LS-3       | 998.81      | 998.90        | 18.0                 | 15.0           | 0.60%        | 12"       | RCP  | <b>NCM</b> |
| LP-4A            | LS-3         | LS-4A      | 998.90      | 999.04        | 31.0                 | 29.0           | 0.50%        | 12"       | RCP  |            |
| LP-5             | LS-4A        | LS-5       | 999.04      | 999.28        | 10.0                 | 7.0            | 3.38%        | 12"       | RCP  |            |
| LP-4B            | LS-3         | LS-4B      | 998.90      | 999.01        | 10.0                 | 7.0            | 1.57%        | 12"       | RCP  |            |

## REMOVE STORM STRUCTURE

| STRUC. NO.       | ID NO.      | STATION  | LOCATION (OFFSET) | TYPE       | NOTES |
|------------------|-------------|----------|-------------------|------------|-------|
| <b>LOVELL LN</b> |             |          |                   |            |       |
| LRS-1            | IN 3569-010 | 52+06.84 | RT-15.44          | EX H INLET |       |

## STORM SEWER ULOs

| ULO NO. | STATION  | LOCATION (OFFSET) | TYPE | NOTES |
|---------|----------|-------------------|------|-------|
| ULO-1   | 50+62.54 | LT-2.23           | GAS  |       |
| ULO-2   | 50+42.66 | LT-12.42          | FO   |       |
| ULO-3   | 50+28.57 | LT-19.65          | SAN  |       |

**NOTE:** PLAN LENGTH IS FROM CENTER OF STRUCTURE TO CENTER OF STRUCTURE. PIPE LENGTH IS ACTUAL LENGTH OF PIPE FROM STRUCTURE WALL TO STRUCTURE WALL. SLOPE CALCULATED USING PIPE LENGTH.

## SPECIFIC NOTES:

(1) STORM SEWER SADDLED SAS- PAID PER SPECIAL ITEM

## STANDARD NOTES:

- ABBREVIATIONS: AE = APRON ENDWALL; RCP = REINFORCED CONCRETE PIPE; HERCP = HORIZONTAL ELLIPTICAL REINFORCED CONCRETE PIPE; DNA = DOES NOT APPLY; SAS = SEWER ACCESS STRUCTURE; LP = LOW POINT INLET STRUCTURE; FP = FIELD POURED STRUCTURE; TR = TOP OF CONCRETE ROOF; NCM = NO CROWN MATCH FOR PIPES

- APPROXIMATE DISCHARGE E.I. GIVEN, ADJUST E.I. AND PIPE SLOPE IN THE FIELD.

- TOP OF CASTING GRADE GIVEN IS THE TOP OF CURB FOR INLET STRUCTURES AND THE FLOWLINE OF THE CLOSED CASTING FOR SAS's.

- TOP OF CONCRETE ROOF (TR) IS 1.25' BELOW TOP OF CASTING UNLESS OTHERWISE NOTED.

- ALL REINFORCED CONCRETE PIPES TO BE CLASS III UNLESS OTHERWISE NOTED.

- SURVEYOR TO CONFIRM THAT ALL INLET STATION / OFFSETS LINE UP WITH PROPOSED CURB AND GUTTER.

- ALL STRUCTURES CALLED OUT AS FIELD POURED SHALL BE FIELD POURED. ALL OTHER STRUCTURES (NOT INDICATED AS FIELD POURED) SHALL BE SUBMITTED TO CITY ENGINEERING FOR APPROVAL IF PRECAST STRUCTURES ARE PREFERRED. CONTACT FADI EL MUSA OF CITY ENGINEERING AT (608) 243-5214 FOR PRECAST APPROVALS, OR FAX SHOP DRAWINGS TO (608) 264-9275, OR EMAIL SHOP DRAWINGS TO FELMUSAGONZALEZ@CITYOFMADISON.COM

# STORM SEWER SCHEDULE

\*REV. 2/3/2017-FBEG

2017 RESURFACING

SHEET NO.

PROJECT NO. 11369

PR-2

STORM SEWER SCHEDULE

PIPING ROCK

CITY OF MADISON

## PROPOSED STRUCTURES

| STRUC. NO.         | STATION   | LOCATION (OFFSET) | TYPE    | TOP OF CASTING | E.I.    | DEPTH | NOTES                |
|--------------------|-----------|-------------------|---------|----------------|---------|-------|----------------------|
| <b>PIPING ROCK</b> |           |                   |         |                |         |       |                      |
| PR-1               | 851+08.75 | RT-6.47           | 3X3 SAS | 1014.55        | 1011.40 | 3.15  | W/ R-1550; (1)       |
| PR-2               | 852+06.18 | RT-13.84          | H INLET | 1014.83        | 1011.99 | 2.84  | FP; W/ R-3067-7004-V |
| PR-3               | 852+85.00 | LT-16.30          | H INLET | 1015.28        | 1012.49 | 2.79  | FP; W/ R-3067-7004-V |

## PIPES

| PIPE NO.           | FROM (DNSTM) | TO (UPSTM) | DISCH. E.I. | INLET E.I. | PLAN (PAY) LGTH (FT) | PIPE LGTH (FT) | SLOPE (%) | PIPE SIZE | TYPE           | NOTES |
|--------------------|--------------|------------|-------------|------------|----------------------|----------------|-----------|-----------|----------------|-------|
| <b>PIPING ROCK</b> |              |            |             |            |                      |                |           |           |                |       |
| * PRP-1            | PR-1         | PR-2       | 1011.40     | 1011.99    | 99.0                 | 96.0           | 0.62%     | 12"       | <b>TYPE II</b> | NCM   |
| * PRP-2            | PR-2         | PR-3       | 1011.99     | 1012.49    | 84.0                 | 81.0           | 0.62%     | 12"       | <b>TYPE II</b> | -     |

**NOTE:** PLAN LENGTH IS FROM CENTER OF STRUCTURE TO CENTER OF STRUCTURE. PIPE LENGTH IS ACTUAL LENGTH OF PIPE FROM STRUCTURE WALL TO STRUCTURE WALL. SLOPE CALCULATED USING PIPE LENGTH.

## SPECIFIC NOTES:

(1) CONSTRUCT STRUCTURE OVER EXISTING 18" RCP PIPE.

## STANDARD NOTES:

- ABBREVIATIONS: AE = APRON ENDWALL; RCP = REINFORCED CONCRETE PIPE; HERCP = HORIZONTAL ELLIPTICAL REINFORCED CONCRETE PIPE; DNA = DOES NOT APPLY; SAS = SEWER ACCESS STRUCTURE; LP = LOW POINT INLET STRUCTURE; FP = FIELD POURED STRUCTURE; TR = TOP OF CONCRETE ROOF; NCM = NO CROWN MATCH FOR PIPES
- APPROXIMATE DISCHARGE E.I. GIVEN, ADJUST E.I. AND PIPE SLOPE IN THE FIELD.
- TOP OF CASTING GRADE GIVEN IS THE TOP OF CURB FOR INLET STRUCTURES AND THE FLOWLINE OF THE CLOSED CASTING FOR SAS's.
- TOP OF CONCRETE ROOF (TR) IS 1.25' BELOW TOP OF CASTING UNLESS OTHERWISE NOTED.
- ALL REINFORCED CONCRETE PIPES TO BE CLASS III UNLESS OTHERWISE NOTED.
- SURVEYOR TO CONFIRM THAT ALL INLET STATION / OFFSETS LINE UP WITH PROPOSED CURB AND GUTTER.
- ALL STRUCTURES CALLED OUT AS FIELD POURED SHALL BE FIELD POURED. ALL OTHER STRUCTURES (NOT INDICATED AS FIELD POURED) SHALL BE SUBMITTED TO CITY ENGINEERING FOR APPROVAL IF PRECAST STRUCTURES ARE PREFERRED. CONTACT ERIC DUNDEE OF CITY ENGINEERING AT (608) 266-4913 FOR PRECAST APPROVALS, OR FAX SHOP DRAWINGS TO (608) 264-9275, OR EMAIL SHOP DRAWINGS TO EDUNDEE@CITYOFMADISON.COM

PLOT SCALE: ---

PLOT NAME: ---

REV. DATE: ---

ORIGINATOR: CITY OF MADISON STREETS DIVISION

# STORM SEWER SCHEDULE

\*REV. 2/3/2017-FBEG

2017 RESURFACING

SHEET NO.

PROJECT NO. 11369

S-4

STORM SEWER SCHEDULE

SAALSAA ROAD

CITY OF MADISON

## PROPOSED STRUCTURES

| STRUC. NO.                               | STATION   | LOCATION (OFFSET) | TYPE                 | TOP OF CASTING | E.I.    | DEPTH  | NOTES            |
|--|-----------|-------------------|----------------------|----------------|---------|--------|------------------|
| <b>SAALSAA ROAD (OFF ROAD ALIGNMENT)</b> |           |                   |                      |                |         |        |                  |
| SS-1                                     | 816+44.00 | CL                | 30" RCP AE           | -              | 1006.52 | -      | W/ GATE          |
| SS-2                                     | 814+92.90 | CL                | 4X4 SAS              | 1010.50        | 1007.15 | 3.35   | W/ R-1878-B7G    |
| SS-3                                     | 814+03.24 | CL                | 4X4 SAS              | 1011.10        | 1007.58 | 3.52   | W/ R-1878-B7G    |
| SS-4                                     | 811+69.03 | CL                | TERRACE INLET TYPE 3 | 1012.25        | 1008.74 | 3.51   |                  |
| SS-4A                                    | 811+46.00 | LT-9.00           | COLLAR               | -              | 1010.53 | -      | -                |
| SS-5                                     | 811+41.74 | CL                | COLLAR               | -              | 1008.83 | -      | -                |
| SS-6                                     | 810+02.24 | CL                | TERRACE INLET TYPE 3 | 1015.25        | 1010.20 | 5.05   | (1)              |
| <b>SAALSAA ROAD</b>                      |           |                   |                      |                |         |        |                  |
| SS-6A                                    | 804+15.72 | LT-10.36          | COLLAR               | -              | 1012.45 | -      | -                |
| SS-7                                     | 804+06.90 | LT-7.56           | 3X3 SAS              | 1015.26        | 1011.25 | 4.01   | W/ R-1550        |
| SS-7A                                    | 804+07.96 | LT-10.36          | 3X3 SAS              | 1015.34        | 1012.25 | 3.09   | W/ R-3067-7004-V |
| SS-8                                     | 801+82.69 | LT-7.42           | 3X3 SAS              | 1016.21        | 112.36  | 903.85 | W/ R-1550        |
| SS-8A                                    | 801+82.65 | LT-15.36          | H INLET              | 1016.42        | 1012.91 | 3.51   | W/ R-3067-7004-V |
| SS-9                                     | 800+61.05 | LT-7.35           | 3X3 SAS              | 1018.55        | 1014.73 | 3.82   | W/ R-1550        |
| SS-9A                                    | 800+61.59 | RT-45.96          | H INLET              | 1019.10        | 1015.23 | 3.87   | W/ R-3067-7004-V |
| SS-9B                                    | 800+61.94 | RT-54.55          | H INLET              | 1019.30        | 1015.79 | 3.51   | W/ R-3067-7004-V |
| SS-9C                                    | 800+31.21 | RT-44.06          | H INLET              | 1020.32        | 1015.73 | 4.59   | W/ R-3067-7004-V |
| SS-10                                    | 800+27.50 | LT-15.24          | H INLET              | 1020.00        | 1016.09 | 3.91   | W/ R-3067-7004-V |
| SS-10A                                   | 800+03.31 | RT-15.47          | H INLET              | 1021.35        | 1017.19 | 4.16   | W/ R-3067-7004-V |

## STORM STRUCTURE REMOVALS

| STRUCTURE NO.       | ID NO.     | STATION   | LOCATION (OFFSET) | TYPE         | NOTES |
|---------------------|------------|-----------|-------------------|--------------|-------|
| <b>SAALSAA ROAD</b> |            |           |                   |              |       |
| RS-1                | IN2864-001 | 804+07.96 | LT-10.36          | DOUBLE H INL | (3)   |

## PIPE ABANDONMENTS

| ABAN NO.            | ABAN FROM | ABAN TO | LENGTH (FT) | PIPE SIZE | TYPE | NOTES |
|---------------------|-----------|---------|-------------|-----------|------|-------|
| <b>SAALSAA ROAD</b> |           |         |             |           |      |       |
| NONE                |           |         |             |           |      |       |

## SPECIFIC NOTES:

- (1) STATIONED TO CENTER OF GRATE; SEE SDD 5.7.12B; TOP OF CURB PROVIDED IS TOP OF GRATE, CONTRACTOR IS REMINDED THE CURB FLOWLINE IS TO BE HAND POURED TO CREATE A DEPRESSION IN THE FLOWLINE AND FLUME INTO THE STRUCTURE. THE FLOWLINE IS NOT TO BE POURED STRAIGHT THROUGH AND THE DIFFERENCE BETWEEN THE FLOWLINE ELEVATION AND ENTRANCE LIP ELEVATION TAKEN UP IN THE 1-2 FT TRANSITION.
- (2) PAID 4' OUTSIDE NEW PIPE TRENCH
- (3) PAID AS TWO INLET REMOVALS

## PIPES

| PIPE NO.            | FROM (DNSTM) | TO (UPSTM) | DISCH. E.I. | INLET E.I. | PLAN (PAY) LGTH (FT) | PIPE LGTH (FT) | SLOPE (%) | PIPE SIZE | TYPE    | NOTES |
|---------------------|--------------|------------|-------------|------------|----------------------|----------------|-----------|-----------|---------|-------|
| <b>SAALSAA ROAD</b> |              |            |             |            |                      |                |           |           |         |       |
| SP-1                | SS-1         | SS-2       | 1006.52     | 1007.15    | 158.5                | 126.5          | 0.50%     | 30"       | TYPE II |       |
| SP-2                | SS-2         | SS-3       | 1007.15     | 1007.58    | 90.0                 | 85.0           | 0.50%     | 30"       | TYPE II |       |
| SP-3                | SS-3         | SS-4       | 1007.58     | 1008.74    | 234.0                | 231.0          | 0.50%     | 30"       | TYPE II |       |
| SP-4                | SS-4         | SS-5       | 1008.74     | 1008.83    | 19.0                 | 18.0           | 0.50%     | 30"       | TYPE II |       |
| SP-4A               | SS-4         | SS-4A      | 1007.94     | 1010.53    | 23.5                 | 22.5           | 11.51%    | 21"       | RCP     |       |
| SP-5                | SS-5         | SS-6       | 1008.83     | 1010.20    | 137.5                | 136.5          | 1.00%     | 30"       | RCP     |       |
| * SP-6              | SS-6         | SS-7       | 1011.20     | 1011.25    | 14.0                 | 11.0           | 0.50%     | 18"       | TYPE II |       |
| * SP-6A             | SS-6         | SS-6A      | 1012.38     | 1012.45    | 8.0                  | 7.0            | 1.00%     | 15"       | TYPE II |       |
| * SP-7              | SS-7         | SS-8       | 1011.25     | 1012.36    | 224.0                | 221.0          | 0.50%     | 18"       | TYPE II |       |
| * SP-7A             | SS-7A        | SS-7       | 1012.25     | 1012.25    | 8.0                  | 5.5            | 0.00%     | 18"       | TYPE II |       |
| * SP-8              | SS-8         | SS-9       | 1012.36     | 1014.73    | 121.5                | 119.0          | 2.00%     | 18"       | TYPE II |       |
| * SP-8A             | SS-8         | SS-8A      | 1012.86     | 1012.91    | 8.0                  | 5.5            | 1.00%     | 12"       | TYPE II |       |
| * SP-9              | SS-9         | SS-9A      | 1015.23     | 1015.73    | 53.0                 | 50.0           | 1.00%     | 12"       | TYPE II |       |
| * SP-9A             | SS-9A        | SS-9B      | 1015.73     | 1015.79    | 8.50                 | 5.50           | 1.00%     | 12"       | TYPE II |       |
| * SP-9B             | SS-9A        | SS-9C      | 1015.73     | 1016.01    | 30.5                 | 28.5           | 1.00%     | 12"       | TYPE II |       |
| * SP-10             | SS-9         | SS-10      | 1015.23     | 1016.09    | 34.5                 | 31.5           | 2.75%     | 12"       | TYPE II |       |
| * SP-10A            | SS-10        | SS-10A     | 1016.09     | 1017.09    | 39.0                 | 36.5           | 3.00%     | 12"       | TYPE II |       |

## STORM PIPE REMOVALS

| REMOVE NO.          | REMOVE FROM | REMOVE TO | LENGTH (FT) | PAID (Y/N) | PIPE SIZE | TYPE | NOTES |
|---------------------|-------------|-----------|-------------|------------|-----------|------|-------|
| <b>SAALSAA ROAD</b> |             |           |             |            |           |      |       |
| RPS-1               | 24" AE      | SP-3      | 360.0       | Y-PARTIAL  | 24"       | CMP  | (2)   |
| RPS-2               | RS-1        | SS-6A     | 7.0         | N          | 12"       | RCP  |       |
| RPS-3               | RS-1        | SS-7      | 7.0         | N          | 12"       | RCP  |       |

## NOTE:

PLAN LENGTH IS FROM CENTER OF STRUCTURE TO CENTER OF STRUCTURE. PIPE LENGTH IS ACTUAL LENGTH OF PIPE FROM STRUCTURE WALL TO STRUCTURE WALL. SLOPE CALCULATED USING PIPE LENGTH.

## STANDARD NOTES:

- ABBREVIATIONS: AE = APRON ENDWALL; RCP = REINFORCED CONCRETE PIPE; HERCP = HORIZONTAL ELLIPTICAL REINFORCED CONCRETE PIPE; DNA = DOES NOT APPLY; SAS = SEWER ACCESS STRUCTURE; LP = LOW POINT INLET STRUCTURE; FP = FIELD POURED STRUCTURE; TR = TOP OF CONCRETE ROOF; NCM = NO CROWN MATCH FOR PIPES
- APPROXIMATE DISCHARGE E.I. GIVEN, ADJUST E.I. AND PIPE SLOPE IN THE FIELD.
- TOP OF CASTING GRADE GIVEN IS THE TOP OF CURB FOR INLET STRUCTURES AND THE FLOWLINE OF THE CLOSED CASTING FOR SAS's.
- TOP OF CONCRETE ROOF (TR) IS 1.25' BELOW TOP OF CASTING UNLESS OTHERWISE NOTED.
- ALL REINFORCED CONCRETE PIPES TO BE CLASS III UNLESS OTHERWISE NOTED.
- SURVEYOR TO CONFIRM THAT ALL INLET STATION / OFFSETS LINE UP WITH PROPOSED CURB AND GUTTER.
- ALL STRUCTURES CALLED OUT AS FIELD POURED SHALL BE FIELD POURED. ALL OTHER STRUCTURES (NOT INDICATED AS FIELD POURED) SHALL BE SUBMITTED TO CITY ENGINEERING FOR APPROVAL IF PRECAST STRUCTURES ARE PREFERRED. CONTACT FADI EL MUSA OF CITY ENGINEERING AT (608) 266-4913 FOR PRECAST APPROVALS, OR FAX SHOP DRAWINGS TO (608) 264-9275, OR EMAIL SHOP DRAWINGS TO EDUNDEE@CITYOFMADISON.COM